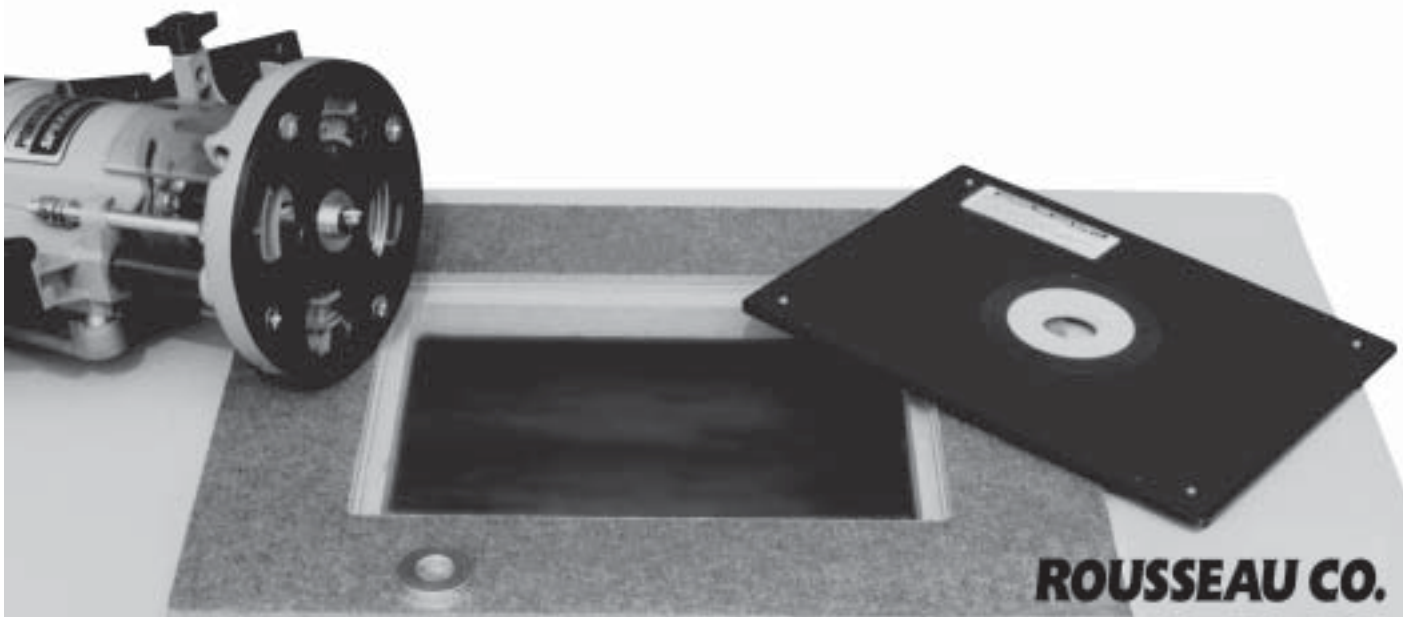
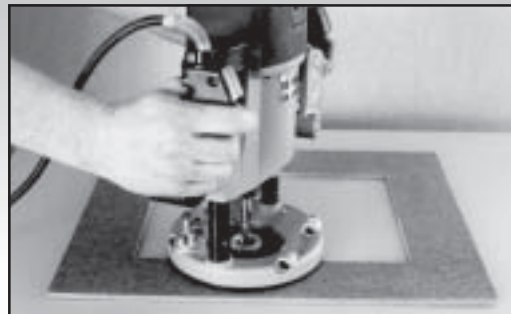


3509-T

# INSTALLATION KIT

A Quick Way To Install Your Rousseau Co  
Base Plate/or Router Lift LS

- Easily Locate Base Plate Position
- Accurately Route Opening For Base Plate
- Easy-To-Follow Instructions



**ROUSSEAU CO.**

## GENERAL INFORMATION

You have purchased a ROUSSEAU COMPANY MODEL 3509-T BASE PLATE / OR ROUTER LIFT LS INSTALLATION KIT. This product is designed to easily locate and accurately guide your router while cutting a hole and rabbets in your router table top.

### HARDWARE INCLUDED

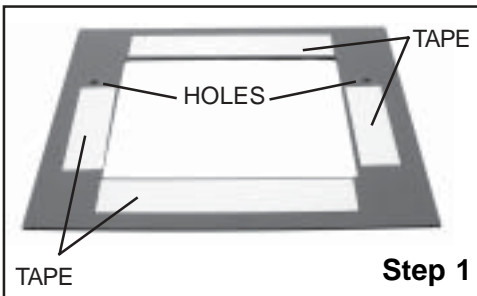
1. Pressboard Template
2. Template Guide Ring
3. Guide Ring Bushing & Set Screw
4. Tape (3) 12" Pieces

### TOOLS NEEDED

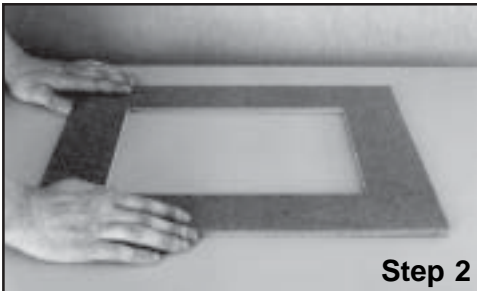
1. Router mounted to Rousseau Base Plate, or base plate that accepts Porter Cable style template guides.
2. 1/2" Straight Router Bit
3. Base Plate with 1-3/8" Counter Sink Hole

## INSTALLATION INSTRUCTIONS

**Step 1.** Read through all the directions before proceeding with these steps. Cut one of the three pieces of double-sided 1/16" thick tape in half so they are each 6 inches long. Peel the paper from one side of one piece of tape. Press this piece with the sticky side down along one side of the back of the template close to the inside edge. Repeat this for the three remaining pieces of tape. The two 6 inch pieces go just under the holes. (See Step 1).



**Step 2.** Determine the location of your base plate in your router table top. Before applying template to the table top, ensure proper placement of base plate by lining up the inside of the template with the area being routed. Take into account that the through hole is at least 1 inch smaller than the template and the base plate is about 1/4 inch smaller than the template. Mark this location with a pencil.



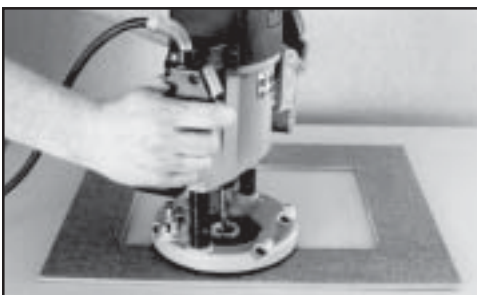
Peel back the paper from the double-sided tape and adhere the template to your router top in the location marked with the holes in the template toward the back.

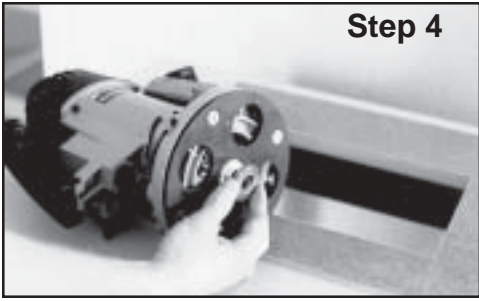


### **Please Read Before Proceeding With Baseplate Installation**

The 3509-T Router Installation Template is designed make a hole slightly larger than the 3509 base plate for several reasons:

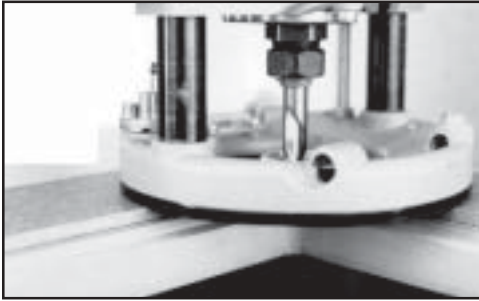
- Most top materials will contract and expand with temperature and humidity changes. We have tried to provide enough space for easy removal even when the laminate top contracts around the base plate.
- Repeatedly re-sharpened router bits cut undersized holes. The larger template reduces problems caused from the use of these bits.
- Although the closest tolerances are maintained, base plate dimensions still vary slightly.
- All excess play resulting from an oversize hole can easily be eliminated with the use of Rousseau Company's exclusive corner snuggers (provided with every 3509 base plate).



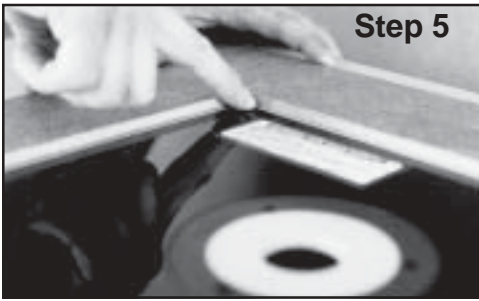


**Step 4**

**Step 3.** Install the guide ring and guide ring bushing onto your router base plate using the set screw and Knurled Ring to hold them in place. If router base does not accept Porter Cable style template guides, mount router to the Rousseau Company Router Base Plate before proceeding. Using a 1/2" router bit and following the template with the guide ring bushing, cut a hole completely through the top. It's safest to travel in a clockwise direction. Keep saw dust from building up to insure a smoother more accurate cut.

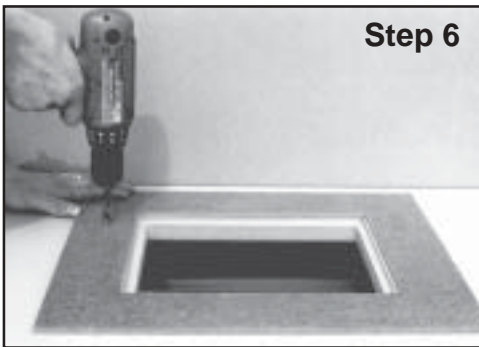


**Step 4.** After finishing the through hole, remove the guide ring bushing from the guide ring by loosening the set screw. Adjust the router bit to less than 1/4" depth of cut. Make the first cut following the template with the guide ring as before.



**Step 5**

**Step 5.** Fine tune the depth of cut for a perfect fit to the base plate. If the base plate is being used on the router making the cut, just turn the router over and drop it in to check the depth of cut. Cut the rabbet 5/16 inch deep for the Rousseau Co. Base Plate Leveling System. This means that this base plate will sit 1/16" deep without the leveling system to allow for some adjustment. Since the Rousseau base plate has some crown in it, a perfect fit means the in feed edge of the plate should be slightly below flush, the center and the out feed edge of the base plate should be flush with the top of the router table. Since the router bit is in one spot, slight rocking over the crown in the router plate will not cause any loss in accuracy and improves in feed smoothness



**Step 6**

**Step 6.** If mounting the Rousseau 3301/3301DL Router Fence, make sure the two holes in the template are furthest away from the front of the router top. Drill two 3/8" holes using the holes in the template as a guide.

**Step 7.** When finished, be sure to double check the depth of the cut before removing the template. Remove the template and adhesive tape residue from top. This residue is much easier to remove if the template isn't left on the top too long.

PARTS ILLUSTRATION

Grey ring holds guide ring in regular Rousseau Base Plate mounted on router. Also any base plate mounted on router with 1-3/8" counter sunk hole works here

Guide ring spaces router bit 1/8" from template to make rabbet cut 1/4" smaller than template

Holes locate holes in top for Rousseau fence

1/2" Straight Router bit mounted in Router collet

Knurled ring holds guide ring in grey ring or base plate

Guide ring bushing spaces router bit 1/2" from template to make through hole 1" smaller than template

Set screw holds bushing to guide ring

Template is double stick taped to top being routed

**IMPORTANT**

**Read and understand all safety guidelines and instructions carefully before operating.**

**ROUSSEAU CO.**

1718 13th Street Clarkston, WA 99403  
800-635-3416 • 509-758-3954 • Fax 509-758-4991  
email:salesinfo@rousseauco.com • www.rousseauco.com