

# ROUSSEAU CO.

## Quality Power Tool Accessories

### OWNER'S MANUAL



**MADE IN THE  
USA**

Lifetime  
Warranty... Always

## Benchtop Folding Router Table

Model 3111

### IMPORTANT

Read and understand all safety guidelines and instructions carefully before operating.

## **Thank you for purchasing a Rousseau 3111 Router Table**

Rousseau folding / portable router tables meet the needs of the mobile, professional contractor as well as the space starved woodcrafter. Featuring our pro-style top, the Rousseau Deluxe Router Base Plate, precision machined router fence and folding leg set. Our robust design handles your heaviest jobs, yet each table quickly folds to provide for compact storage and easy transport. Accessorize your table with a Rousseau Power Switch, Rousseau Dual Pressure Feather Boards, and the Rousseau Router Lift System.

### **Warranty**

This product has a life time warranty to the original purchaser that applies to defect in materials and workmanship only. We will repair or replace the product or part(s) at our discretion. This warranty does not apply to product failure of defects due to direct or indirect mis-use, abuse, negligence, accidents, alterations, repairs or lack of maintenance. The item must e shipped prepaid to our Clarkston, WA location. If items must be returned for warranty service, call to receive a Returned Goods Authorization (RGA) number and further instruction.

### **Safety Guidelines**

This section contains important safety information concerning a hazard that may cause serious injury or death, and/or damage to stand or equipment if used improperly. Please read the following instructions very carefully.

#### **⚠WARNING**

Always follow the safety recommendations and guidelines provided by the manufacture of your tools. When in doubt refer to your owner's manual.

#### **⚠WARNING**

Always set stand on level ground or floor surface, making sure all legs are in contact with the ground or floor. Failure to do so could result in travel, movement or the collapse of the table causing injury to the operator or to the equipment.

#### **⚠WARNING**

Always keep hands clear of pinch points and moving router bits. Failure to do so could result in serious injury of loss of fingers

#### **⚠WARNING**

Never remove existing guards of safety equipment from power tools. Operation without guards could result in loss of fingers, severe injury or death.

## Set Up

After removing your router table from the box, unfold the legs following the folding instructions outlined below. Adjust the position of the table to attain the most stable position.

Please refer to the base plate manual for instructions on mounting your router. After the router is mounted to your base plate simply drop it in the opening and level to the top of the table using the nylon thumb screws provided and then install corner snuggers.

Please refer to your Router fence manual for fence assembly instructions. Mount the assembled fence to the table using the provided T-track nut and knob. You will find the fence becomes secure with minimum torque on the knobs.

## Folding / Unfolding instructions



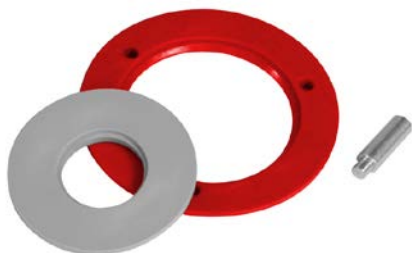
1. While standing at the side of the stand, bring the stand to balance on the non traveling side of the leg set.
2. While balancing the table use one hand to grip the front of the table top and lift up until the traveling side of the leg set becomes free to move.
3. Move the traveling side of the leg set to the Full extent of it's travel and then gently release the stand top locking in the position of the leg.
4. Move the stand to a stable position.

# ROUSSEAU ROUTER TABLE ACCESSORIES



## **Power Switch Model 3506**

Crash bar for a quick convenient and safe shut off.



## **INSERT RINGS W/HOLDER PIN MODEL 3509-1R**

Replacement rings for the 3509  
Router base Plate.



## **Feather Board Single Pack Model 3301-5 Dual Pack Model 3301-10**

Hold work securely and safely.



## **Aluminum Base Plate Model 3509-AL**

Strong and flat with  
a hard anodize surface.



## **T-Nut Kit Model 3501**

For attaching accessories and  
fixtures.

# **ROUSSEAU CO.**

1392 Port Drive, Clarkston, WA 99403  
800.635.3416 • 509.758.3954 • Fax 509.758.4991  
Email: [salesinfo@rousseauco.com](mailto:salesinfo@rousseauco.com) • [www.rousseauco.com](http://www.rousseauco.com)