

ROUSSEAU CO.

Quality Power Tool Accessories

Outfeed Table Model 2720

MADE IN THE
USA

Lifetime
Warranty...*Always*

2720

FEATURES

- 18"x45" Surface with HPL Professional Grade Laminate
- Reliable Locking Assembly
- Powder Coated Steel Construction
- Hinged Folding Legs for Convenient Storage And Transport
- Front Edge Is Slightly Lower Than Saw To Prevent Material Kickback
- No Assembly Required

COMPATIBLE WITH:

Rousseau Models 2745, 2600, 2700XL And 2775, Table Saw Stands. Also Fits Bosch Models 4000 And 4100 Table Saws with the Rousseau Outfeed Table Support Kit (Model 2721)



**Folds Flat For
Transport and
Storage**



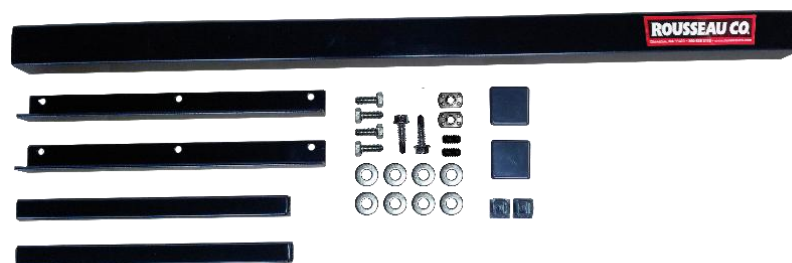
**Outfeed Table Shown
With Rousseau Model
2745**

Outfeed Table Support Kit

Model 2721

MADE IN THE
USA

Lifetime
Warranty...Always!



SUPPORT KIT 2721

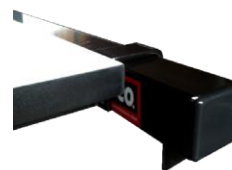
Fits ONLY Bosch Model 4000 and 4100 Table Saw

Includes:

- Support Rail
- Conversion Hardware
- Leg Extenders for Model 2720 Outfeed Table (For Height Adjustments)



Bracket Mounts to Existing Hardware for Quick Installation



Outfeed Table attaches to Support Rail for Precise Saw Alignment



Adjustable Leg Extenders for Model 2720 Ensure the Perfect Working Height

ROUSSEAU COMPANY PRODUCTS Portable • Accurate • Durable

Table Saw Stands • Miter Saw Stands • Router Tables & Accessories
Door Bench • Workbench System & More!

Rousseau Company builds a broad line of quality power tool stands and related accessories for contractors, cabinetmakers, professional woodworkers and hobbyists. Our One Stop Shop approach means that at Rousseau you can find all the right tool stands with the accessories you need for your job site or shop.

Rousseau Company 800-635-3416 • www.rousseauco.com